

Completely pre-assembled Signal Towers / ClearSIGN
Fixing bracket WH



Part No.: 975.656.01

MECHANICAL DATA	
Length	107 mm
Width	104 mm
Height	37 mm
Housing colour	White
Weight with packaging	257 g
Product weight	228 g

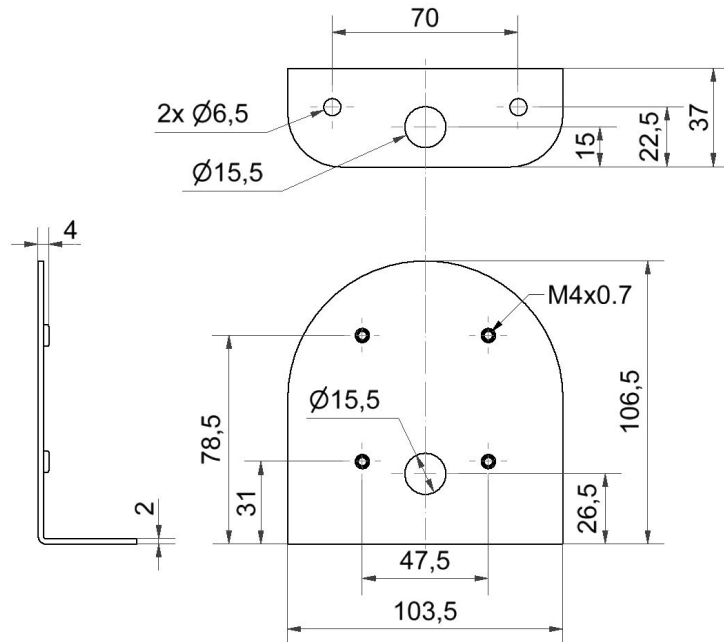
APPROVAL DATA	
WEEE	No
Conforms with RED directive	No
Conforms with ATEX-directive	No
Conforms with CCC	No
Conforms with UL	No
Conforms with FCC	No
Conforms with IC	No
EAC certificate available	No
Conforms with AS-I	No
ICAO Certification	No
Conforms with DNV	No
Conforms with RoHS CN	No

! For additional installation and mounting information, refer to the appropriate user guide at www.werma.com. This printed copy is for information only and is subject to alteration.

Completely pre-assembled Signal Towers / ClearSIGN

Fixing bracket WH

DRAWING



! For additional installation and mounting information, refer to the appropriate user guide at www.werma.com. This printed copy is for information only and is subject to alteration.